

Barrette

OUTDOOR LIVING® 




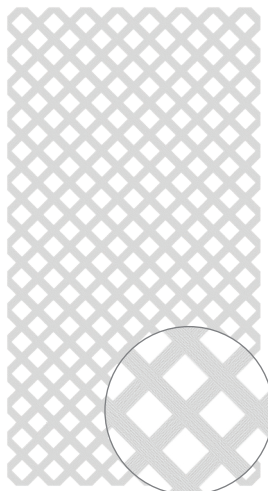
LATTICE
PRODUCT INFORMATION



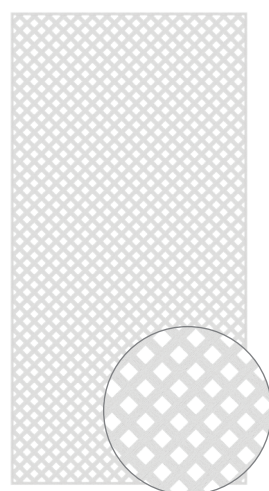
Barrette Outdoor Living plastic lattice is perfect for adding unique detailing while providing the necessary privacy you want. Strong and durable, lattice can't be attacked by termites or other wood eating pests, and installs quickly and easily. Low-maintenance, lattice needs no sanding, staining, or painting to maintain its classic look. With a variety of styles and accessories to match, lattice can be the customizable solution you're looking for.

FEATURES & BENEFITS

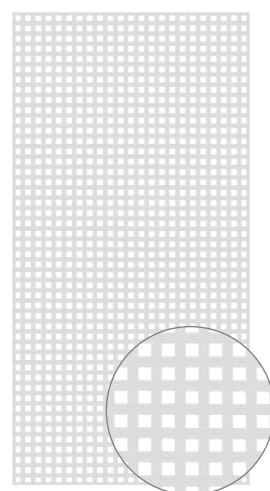
- Strong & durable
- Quick and easy to install
- Transferable Limited Lifetime Warranty 
- SolarGuard® prevents fading and discoloration
- Low-maintenance



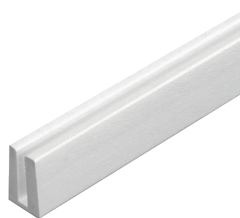
Classic Diamond
Nominal Sheet Size:
4' x 8', 2' x 8'
*2' x 8' Available in White Only



Privacy Diamond
Nominal Sheet Size:
4' x 8'



Privacy Square
Nominal Sheet Size:
4' x 8'
Available in White Only



Cap Moulding



Divider Moulding



Color matched 1½" Stainless Steel Screws